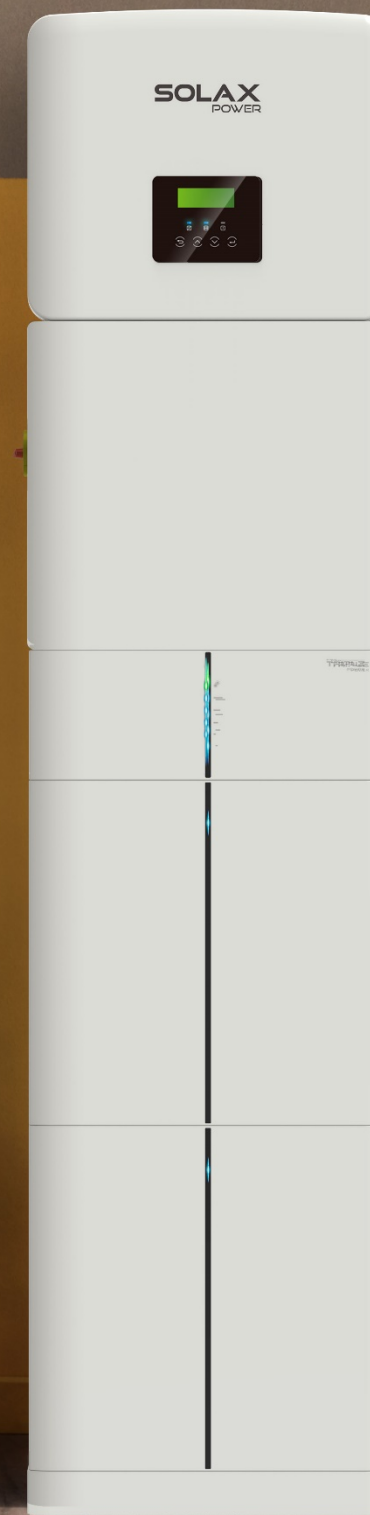
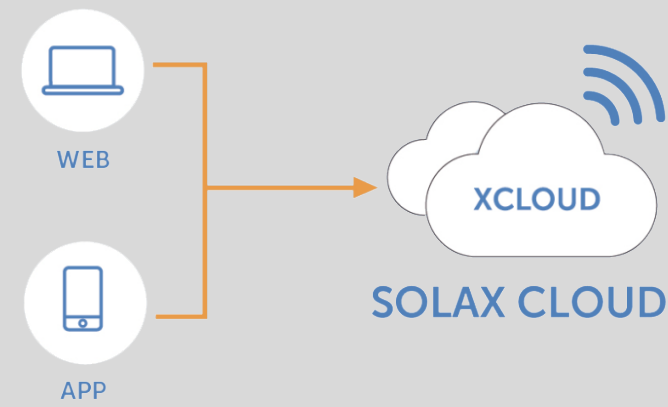


The 4th Generation of Energy Storage System

X1-ESS G4

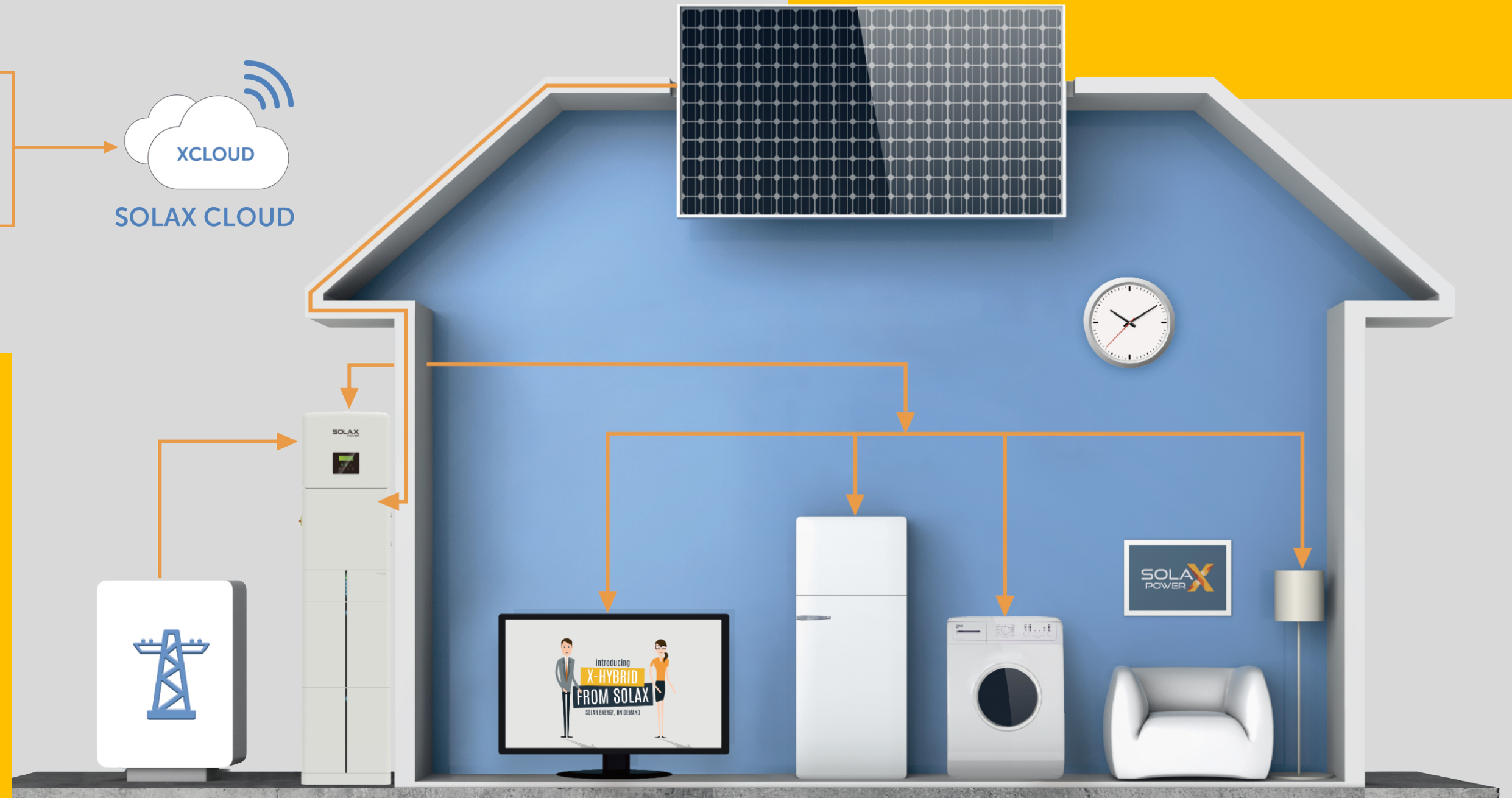


Launched in December, 2020, X1-ESS G4 is a remarkable money-saving and energy-saving solution for residential purpose.



X1-ESS G4

HIGH VOLTAGE
ALL-IN-ONE STORAGE SYSTEM



X1-HYBRID G4

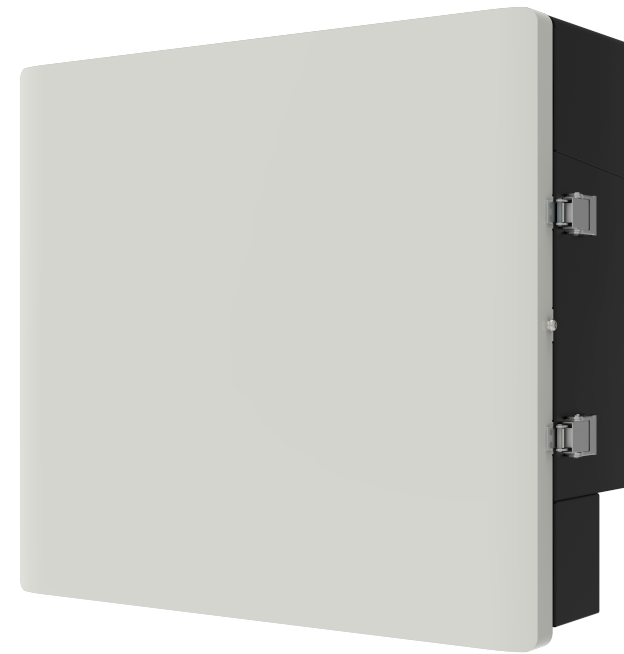
3.0kW/3.7kW/5.0kW/6.0kW/7.5kW

- Support 150% oversized PV power and store excess energy to batteries
- Slow temperature rising

Key Parameters	X1-Hybrid G4
IP Class	IP65
Dimensions (mm)	482*417*181
Net weight (kg)	22 / 23
Operating temperature range (°C)	-35 to 60
Storage temperature (°C)	-40 to 70



X1-MATEBOX



Key Parameters	X1-Matebox
IP Class	IP65
Dimensions (mm)	482*437*185
Net weight (kg)	10
Operating temperature range (°C)	-35 to 60
Storage temperature (°C)	-40 to 70

ATS Devices

CT

Meter (optional)

Circuit
Breaker

RCD

DC switch

One
Matebox
contains:

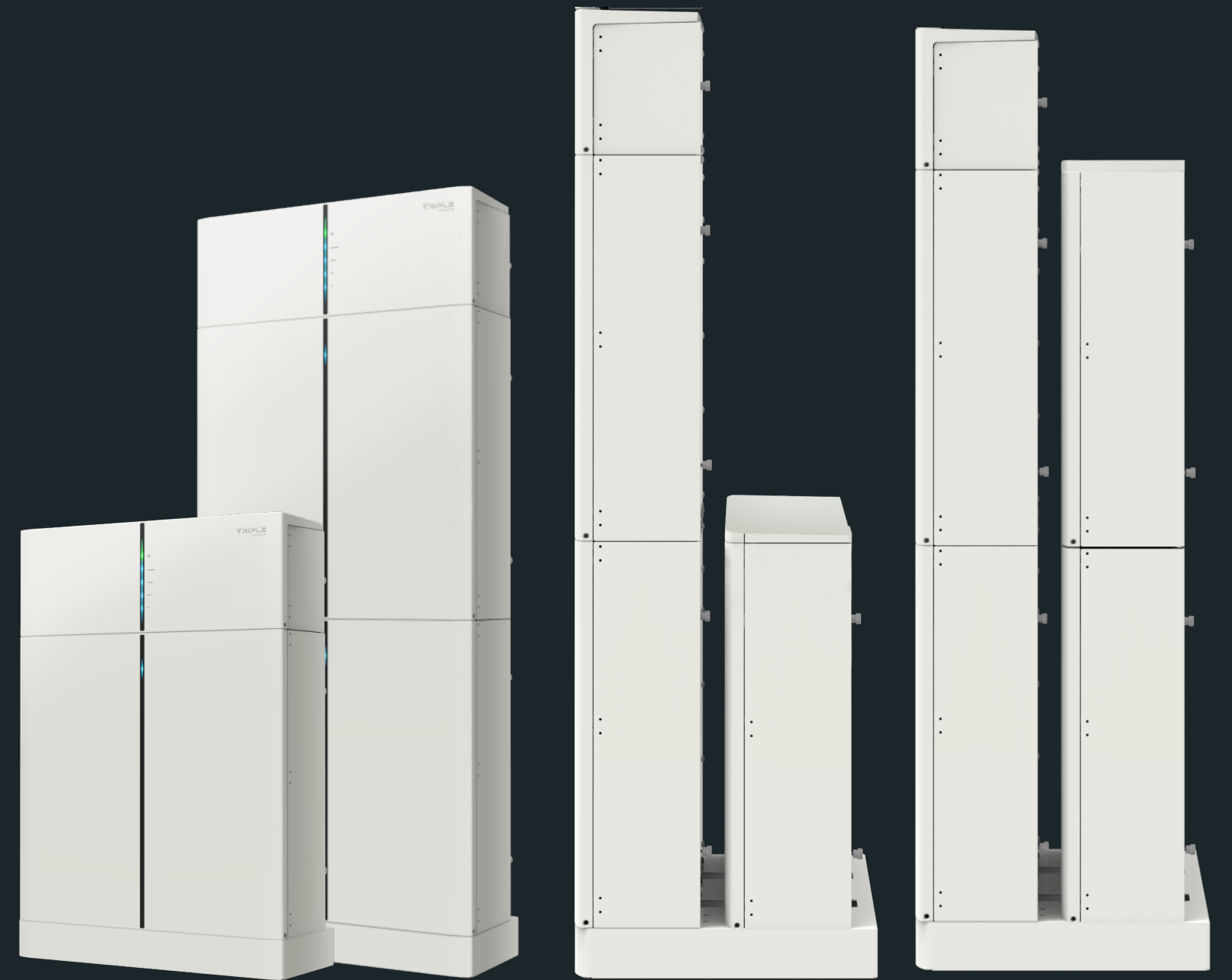


Triple Power Battery 3.0

(1~4 pcs applicable for X1-ESS G4)

- Wide working temperature range: -30°C~50°C
- 1 hour fast charging
- LiFePO₄ battery secure your safety

Key Parameters	T-BAT 3.0
IP Class	IP67
Dimensions (mm)	482*174*148
Net weight (kg)	482*472*148 (each battery module)
Operating temperature range (°C)	33
Storage temperature (°C)	-30 to 50



FEATURES OVERVIEW



ONLY COST

30min

with one single installer
to finish the installation of X1-ESS G4

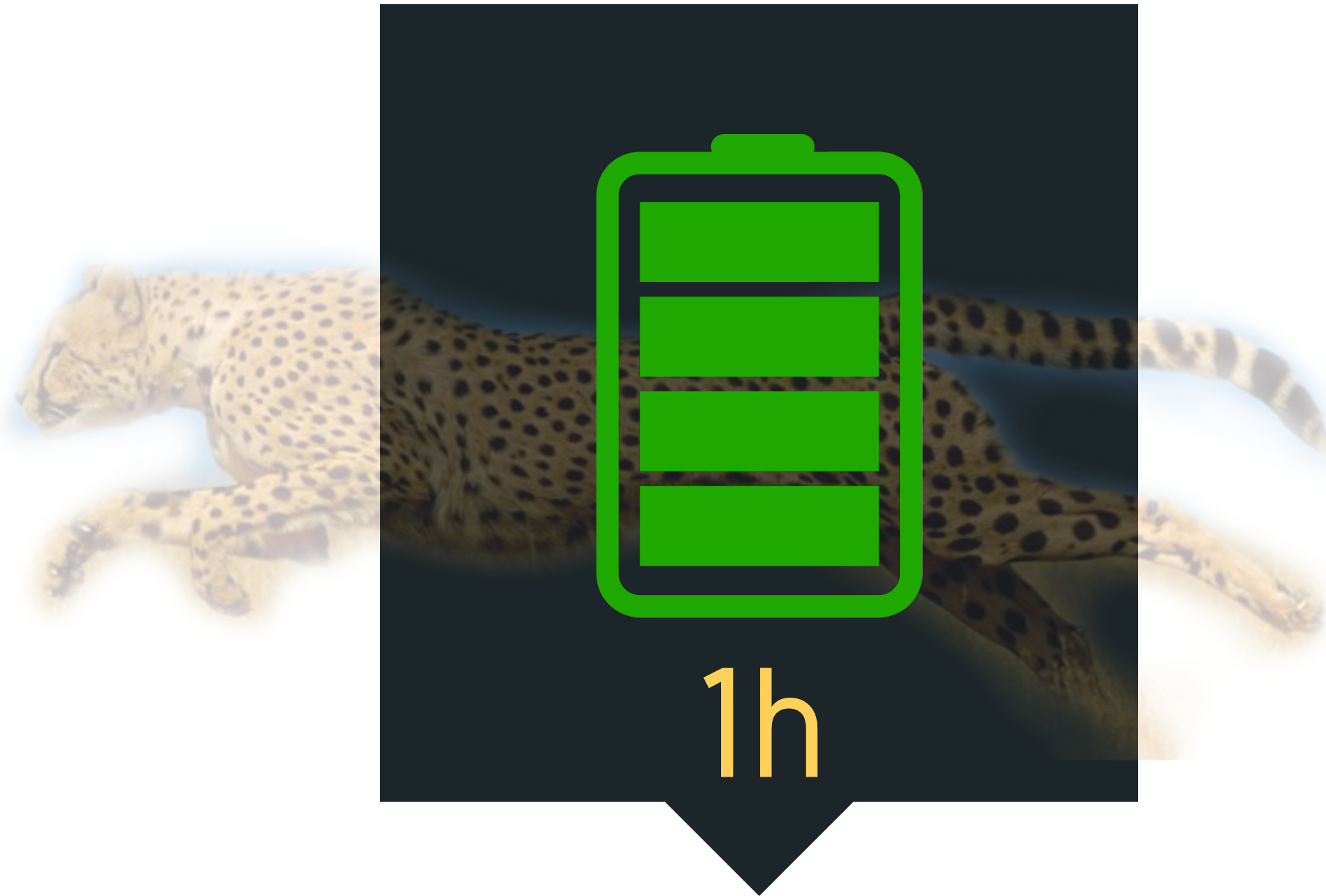
We got rid of the complicated wiring work by laying all the needed wires in the Matebox. All you need to do is to install one module on the top of another, and connect cables which are already well-sorted in the Matebox to different ports.

Perfect Performance under $-30^{\circ}\text{C}/-22^{\circ}\text{F}$

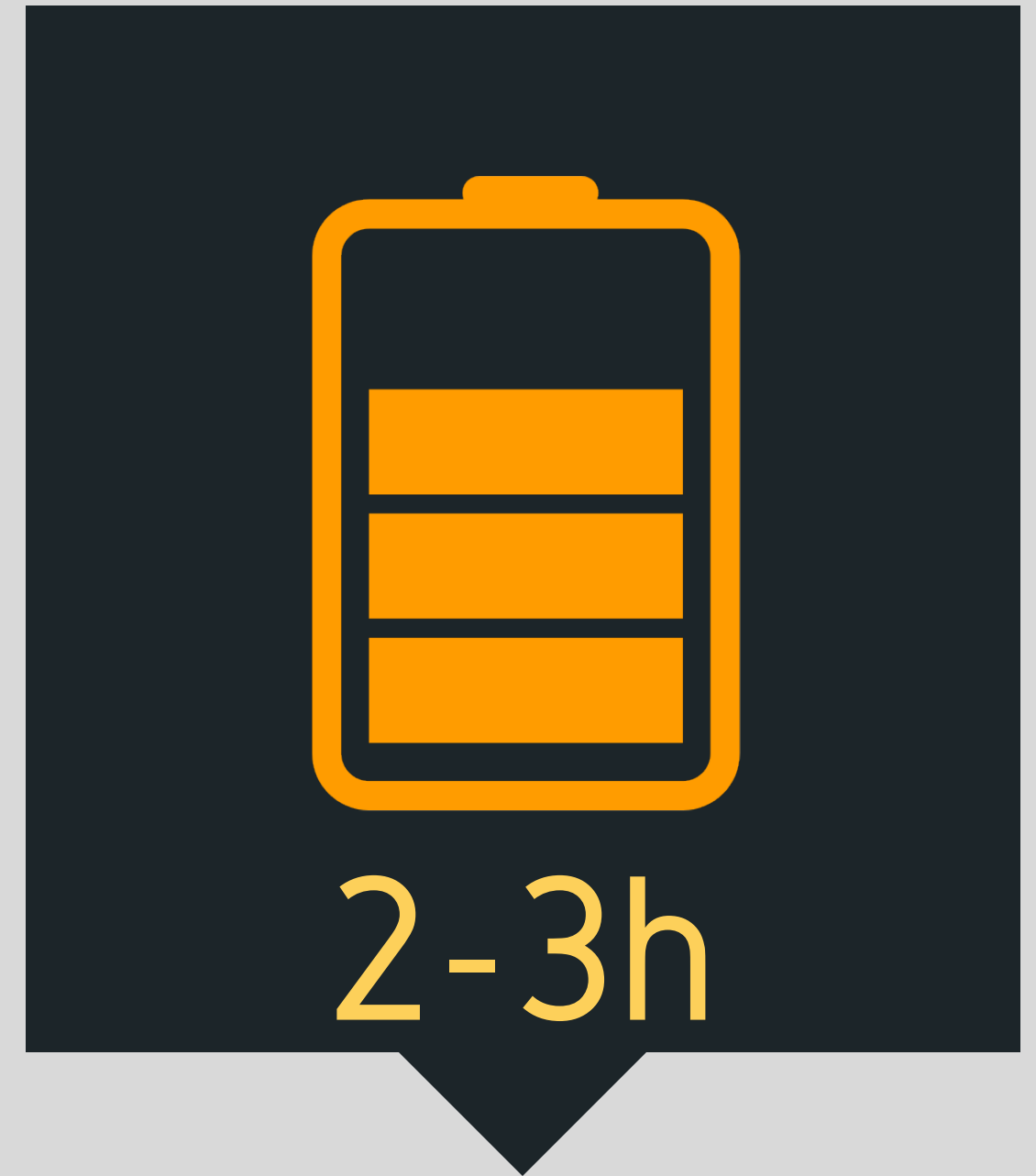
The integrated smart temperature balancing unit inside the battery ensures a perfect ambient working temperature.



FAST CHARGING



X1-ESS G4



Regular ESS

“

HIGH RELIABILITY & DURABILITY

The new X1-ESS G4 has passed following tests:

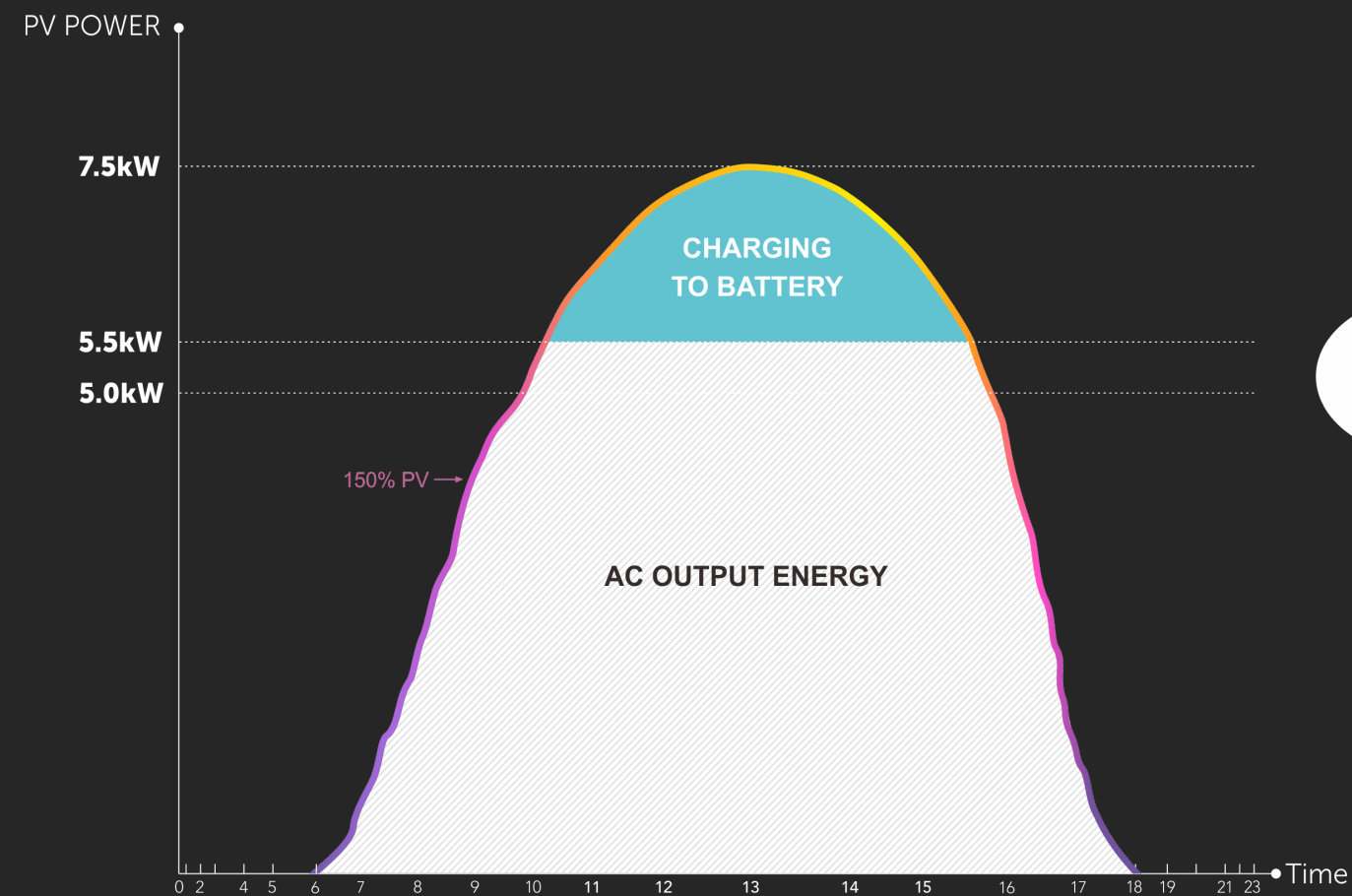
- HALT Test
- Extreme Temperature Test
- Salt Spray Test
- Aging Test with full working load



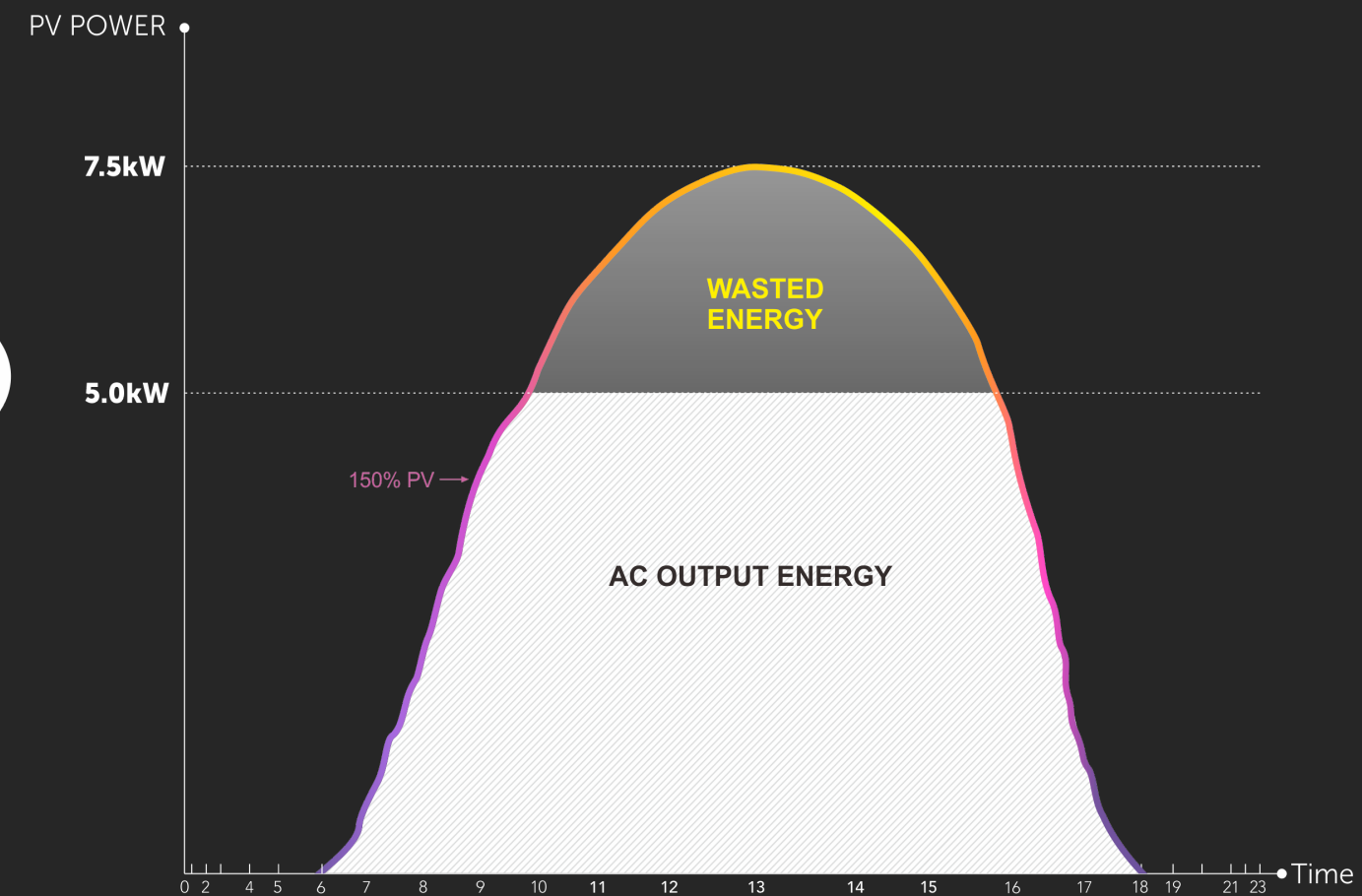
150% Oversized PV Power Supported

More Solar Energy Lower Electric Bill

Oversized SolaX inverter with a higher DC/AC ratio (1.5:1) will produce more energy and higher yields during the day for use.



X1-Hybrid G4 5kW as example



* Normal 5kW hybrid inverter as example

X-ESS G4 can help you maximize the solar power generated from your PV panels by storing all the excess energy in the Triple Power batteries for night or backup use.

ALL-IN-ONE DESIGN

A very calm and elegant piece of art to be placed into your home. This graceful, light-colored, all-in-one design will never be out-dated, just like diamonds.





Global Germany Spain France USA Mexico Latin America Australia India China

pv magazine

Twitter Facebook LinkedIn YouTube Subscriptions User Profile Search

News Features Events Awards Partner news pv magazine test Print archive About Advertise

TOP NEWS

All-in-one residential battery inverter solution from Solax

DECEMBER 2, 2020 EMILIANO BELLINI

The new solution integrates the inverters of Solax's X-1 Hybrid G4 series and its Triple Power 3.0 Battery systems. According to the manufacturer, the hybrid battery inverter can be deployed in only 30 minutes and by a single person.

The article shared SolaX new product to its global readers with a thorough introduction of X-ESS G4, especially the key point that the system “features an ambient operating temperature range of -30 degrees Celsius to 50 degrees Celsius”, which was highlighted by the article for multiple times.

**THANK
YOU**

BEST WISHES TO 2021

